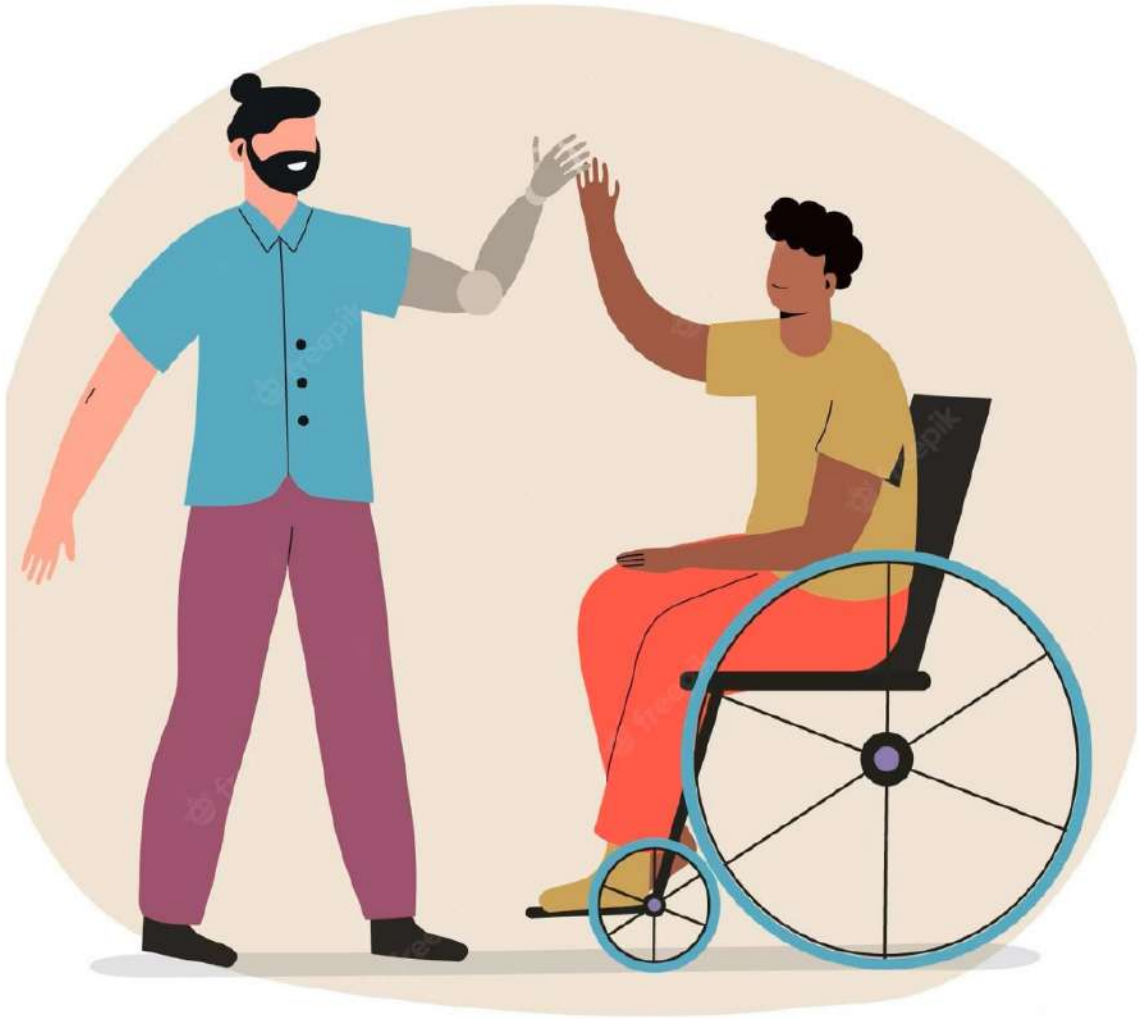


DISABLED FRIENDLY POLICY



**SANATAN DHARM COLLEGE,
MUZAFFARNAGAR (U.P.) INDIA**

Affiliated to Maa Shakumbhari University, Saharanpur

FROM THE PRINCIPAL'S DESK



I am thrilled to introduce a transformative initiative that reflects our unwavering commitment to inclusivity and accessibility – our Disabled-Friendly Campus Policy.

Our Disabled-Friendly Campus Policy serves as a guiding principle to ensure that every member of our college community, including those with disabilities, can fully participate in all aspects of campus life.

Through our Disabled-Friendly Campus Policy, we will foster an environment of empathy, respect, and support. We will prioritize awareness campaigns, sensitivity training, and educational initiatives to cultivate a deeper understanding of disability rights and create a culture of inclusivity. Additionally, we will collaborate with disability support organizations to provide tailored assistance and resources to students, faculty, and staff with disabilities.

By embracing this policy, we can collectively create an environment where everyone feels valued, respected, and empowered to achieve their full potential. The government of India has notified guidelines for evaluation of the disabilities, and procedures to be adopted in higher educational institutes. The college, as per the guidelines of the government, ensures that the persons with disabilities are encouraged.

Let us actively promote an atmosphere of inclusivity and accessibility, not only through physical modifications but also through fostering a mindset of understanding and support.

Prof. Sudhir Kumar Pundir

INTRODUCTION

S.D. College is committed to create an inclusive and accessible environment for all individuals, including those with disabilities. Our Disabled-Friendly Campus Policy aims to ensure equal opportunities, promote accessibility, and support the needs of students, faculty, staff and visitors with disabilities. The policy outlines the following key principles and guidelines:

OBJECTIVES

- To create an inclusive culture to avoid discrimination, exploitation and exclusion of disabled students and staff from all spheres of work and education.
- To create a suitable regulatory mechanism for the effective delivery of services to disabled students, staff of the college and research scholars.
- To ensure implementation of all legislations concerning persons with disabilities.
- To provide accessible and inclusive education.
- To ensure full participation of persons with disabilities and to provide them the equal development opportunities.



MAJOR INITIATIVES TO BE TAKEN

- To determine major grievances about any matter of persons with disabilities. If it is not resolved, it should be sent to the dignitaries.
- To adhere to the orders dealing with fee concessions, examination procedures, reservation policies etc., referring to persons with disabilities as per the government policies from time to time.
- Install ramps and accessible pathways to ensure barrier-free movement across all areas of the campus, including classrooms, laboratories, libraries, administrative buildings, and recreational facilities.
- Ensure that all buildings comply with local accessibility regulations and guidelines.
- Provide reasonable accommodations, such as extended exam time, note-taking support, accessible course materials and seats on the ground floor to ensure equal participation and success of students with disabilities.
- Sensitize faculty and staff about inclusive teaching practices and the diverse needs of students with disabilities.
- Ensure that drinking water stations, toilets, and other amenities are accessible and equipped with appropriate support features for individuals with disabilities.
- Create quiet and accessible spaces for study, and socialization, considering the needs of students with disabilities.
- Promote positive and inclusive language and discourage any form of discrimination or stigmatization.
- Stay updated with local and international accessibility standards and best practices, and incorporate them into the policy as appropriate.



CONCLUSION

By implementing our Disabled-Friendly Campus Policy, S.D. College aims to create a supportive environment that ensures equal access, participation, and opportunities for individuals with disabilities. We are dedicated to fostering an atmosphere of respect, diversity, and empowerment, where everyone can thrive and achieve their full potential.

